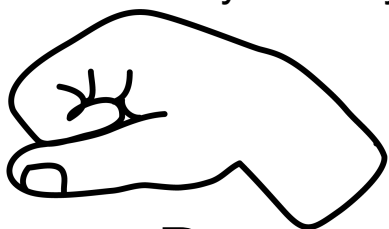


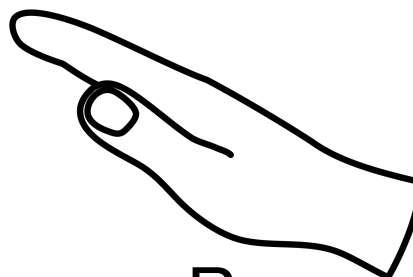
Solfege Cards

Low Do is held at your belly button



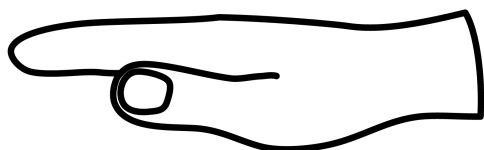
Do

Pronounced: "Doh"



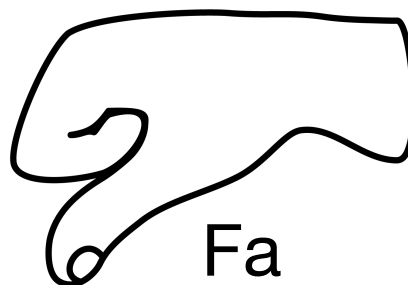
Re

Pronounced: "Ray"



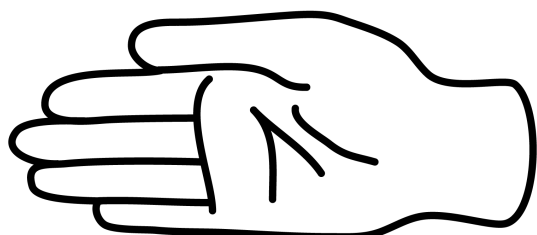
Mi

Pronounced: "Me"



Fa

Pronounced: "Fah"



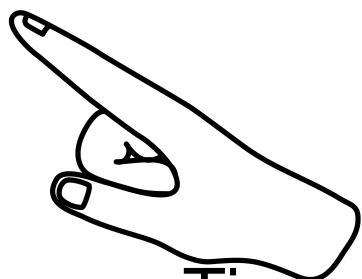
Sol

Pronounced: "So"



La

Pronounced: "Lah"



Ti

Pronounced: "Tee"

High Do is held above your head



Do

Pronounced: "Doh"